

Line 70 Displays

DISPLAY FOR SALADS

Display Refrigerator



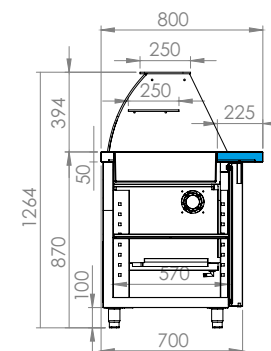
1
DISPLAY Refrigerator with compressor in drawer
Ψυχόμενες Βιτρίνες Σειρά 70



2



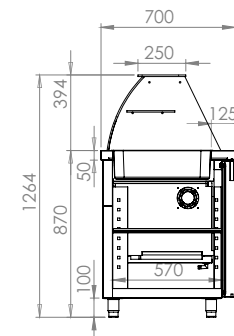
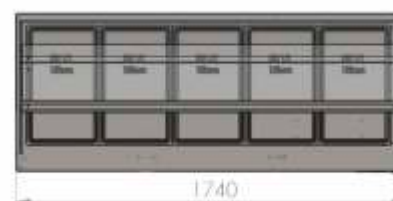
3
With Compressor right
Με μηχανή Δεξιά



optional
bigger working place
πιάσο εργασίας
€ 100



4



Specifications

CHARACTERISTICS / ΧΑΡΑΚΗΡΙΣΤΙΚΑ

Advantages

The particular series has its compressor in a drawer and distributes frost directly to the upper chamber and the display.

Πλεονεκτήματα

Η συγκεκριμένη σειρά διαθέτει συρταρωτή μηχανή και διοχετεύει τη ψύξη απ' ευθείας στην αποθήκη και στη βιτρίνα.

| | Models R290 | Models R449a | Dimensions (l) x (w) x (h) cm | Doors | Vol. (lt) | Power (W)/(hp) | Temp. (°C) | Volume Display |
|---|-------------|--------------|-------------------------------|---------|-----------|----------------|------------|----------------|
| ① | VR-097-ER | VR-097-E | 94 x 70 x 125 | 1 & 1/2 | 180 | 590 / (3/8) | 0 / +8 | 10 GN-1/4 |
| | VR-107-ER | VR-107-E | 107 x 70 x 125 | 1 & 1/2 | 210 | 590 / (3/8) | 0 / +8 | 12 GN-1/4 |
| ② | VR-147-ER | VR-147-E | 141 x 70 x 125 | 2 & 1/2 | 260 | 772 / (1/2) | 0 / +8 | 16 GN-1/4 |
| ④ | VR-177-ER | VR-187-E | 174 x 70 x 125 | 2 & 1/2 | 380 | 850 / (3/4) | 0 / +8 | 20 GN-1/4 |
| ③ | VR-187-ER | VR-187-E | 188 x 70 x 125 | 3 & 1/2 | 380 | 850 / (3/4) | 0 / +8 | 22 GN-1/4 |

| | Models R290 | Models R449a | Dimensions (l) x (w) x (h) cm | Doors | Vol. (lt) | Power (W)/(hp) | Temp. (°C) | Volume Display |
|---|-------------|--------------|-------------------------------|-------|-----------|----------------|------------|----------------|
| | VR-147-GR | VR-147-G | 141 x 70 x 125 | 2 | 260 | 590 / (3/8) | 0 / +8 | 10 GN-1/4 |
| ④ | VR-187-GR | VR-187-G | 188 x 70 x 125 | 3 | 380 | 772 / (1/2) | 0 / +8 | 16 GN-1/4 |
| | VR-237-GR | VR-237-G | 235 x 70 x 125 | 4 | 500 | 850 / (3/4) | 0 / +8 | 22 GN-1/4 |